

CAMERA			
Camera	EVO II Pro Enterprise Camera	EVO II Dual 640T Enterprise Thermal Camera	EVO II Dual 640T Enterprise Visual Camera
Sensor	1-inch CMOS; 20 million effective pixels	Vanadium oxide uncooled infrared focal plane detector	1/2 inch CMOS; 48M effective pixels
Fov	82°	H33°V26°	79°
Aperture	f/2.8 - f/11	f/1.2	f/1.8
Focus Range	1m to ∞	-	0.5m to ∞
Equivalent Focal Length	28.6 mm	57mm	25.6mm
Zoom	1-16x (up to 3x lossless zoom)	1-8x	1-16x (up to 4x lossless zoom)

SENSING SYSTEM					
Sensing System Type	Forward	Backward	Upward	Downward	Sides
Accurate Measuring Range	1.6 – 65ft (0.5 - 20m)	1.6 – 52ft (0.5 - 16m)	1.6 – 39ft (0.5 - 12m)	1.6 – 36ft (0.5 - 11m)	1.6 – 39ft (0.5 - 12m)
Detection Range	1.6 – 131ft (0.5 - 40m)	1.6 – 104ft (0.5 - 32m)	1.6 – 78ft (0.5 - 24m)	1.6 – 72ft (0.5 - 22m)	1.6 – 78ft (0.5 - 24m)
Effective Sensing Speed	< 33mph (15m/s)	< 26mph (12m/s)	< 13mph (6m/s)	< 13mph (6m/s)	< 22mph (10m/s)
FOV	Horizontal: 60°, Vertical: 80°	Horizontal: 60°, Vertical: 80°	Horizontal: 65°, Vertical: 50°	Horizontal: 100°, Vertical: 80°	Horizontal: 65°, Vertical: 50°
Service Environment	Forward, Backward, and Sides:Surface with clear pattern and adequate lighting (lux > 15) Upward:Detects diffuse reflective surfaces (>20%) (walls, trees, people, etc.) Downward:Surface with clear pattern and adequate lighting (lux > 15)Detects diffuse reflective surfaces (>20%)(walls, trees, people, etc.)				



WORK LIKE NEVER BEFORE

Optimize your workflow with our toughest EVO II yet, bulked up with new accessories and camera features to meet the demands of professionals in every industry from firefighting to construction. With a foldable design that can be deployed in seconds and easy-to-use controls that can be operated with a single hand, the EVO II Enterprise provides a surefire way to increase efficiency without increasing stress.



16X

16x Digital Zoom



8-mile HD
Transmission



Modular
Accessories



Centimeter-level
Positioning with RTK

ADS-B

ADS-B Receiver



360° Obstacle
Avoidance



High-resolution Imaging

EVO II Pro Enterprise

20MP 1"CMOS Sensor

3x Lossless 16x Digital Zoom Capability

Adjustable Aperture Range of f2.8 to f11

Dual Camera

EVO II Dual 640T Enterprise

640*512 Thermal Imaging Sensor

48MP Visual Camera

Multiple Display Modes: Visual, Thermal, Picture-in-Picture



APPLICATIONS



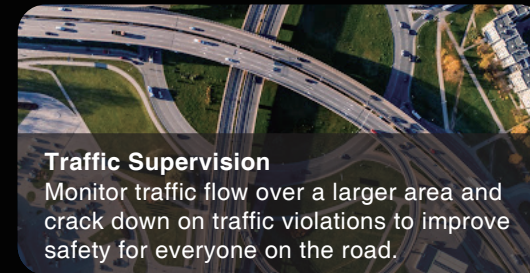
Public Safety

Assess threats from a safe distance or patrol an area during an investigation, freeing up manpower for other tasks.



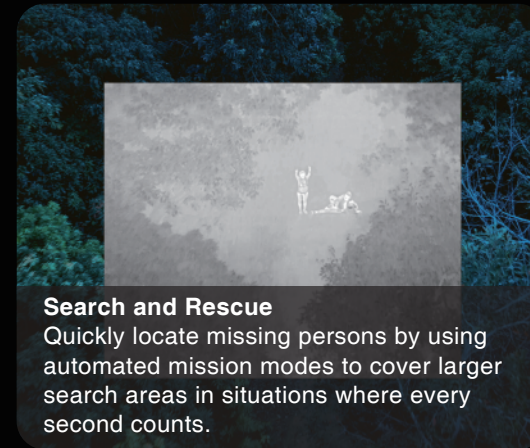
Firefighting

Soar above the flames to identify hotspots, locate victims, and monitor changing conditions, reducing the risk for crew members on the ground.



Traffic Supervision

Monitor traffic flow over a larger area and crack down on traffic violations to improve safety for everyone on the road.



Search and Rescue

Quickly locate missing persons by using automated mission modes to cover larger search areas in situations where every second counts.



Power Inspection

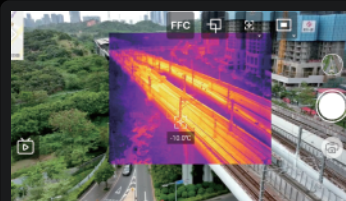
Zip between power lines to quickly spot structural damage or overheating electrical elements, saving time and labor costs.



Mapping

Create cost-effective 3D maps of an area using high-resolution images captured during steady, consistent flight.

MULTIPLE TEMPERATURE MEASUREMENT MODES



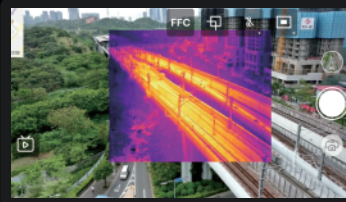
Spot Temperature Measurement

Displays the temperature of a selected object with just a tap of the screen.



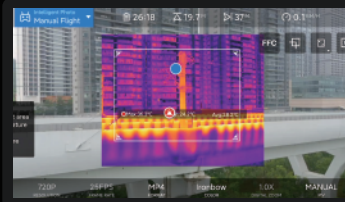
Regional Temperature Measurement

Displays the maximum, minimum, and average temperature of a selected area.



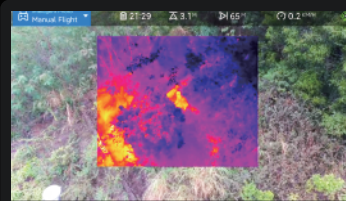
Central Temperature Measurement

Displays the temperature in the center area of the screen.



Temperature Alarm

Alerts the user when the temperature of an area reaches a predetermined threshold.



Isotherm

Detects any objects within a specified temperature range.

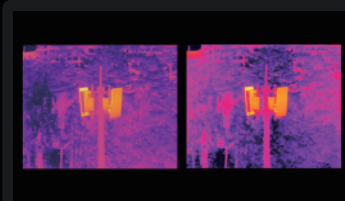


Image Enhancement

Allows the user to adjust image brightness, contrast, and image details in real time.

POWERFUL TELEPHOTO ZOOM

Collect high-definition images from a safe distance with 16x digital zoom that supports 4x lossless zoom (EVO II Dual 640T Enterprise) or 3x lossless zoom (EVO II Dual Pro Enterprise).

16X

Digital Zoom

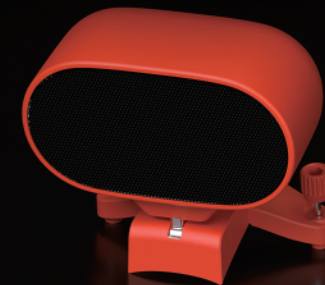


Mission Versatility

With an expanded selection of accessories at its disposal, the EVO II Enterprise can evolve from a simple imaging tool to a multifunctional flight platform that can adapt to different scenarios.



ACCESSORIES



Loudspeaker

Enables more effective on-site communication through long-distance telephony and audio loops.



Spotlight

Beams a powerful, long-distance aerial light when searching or shooting at night.



Strobe

Indicate the location of the aircraft at night to avoid air traffic accidents.

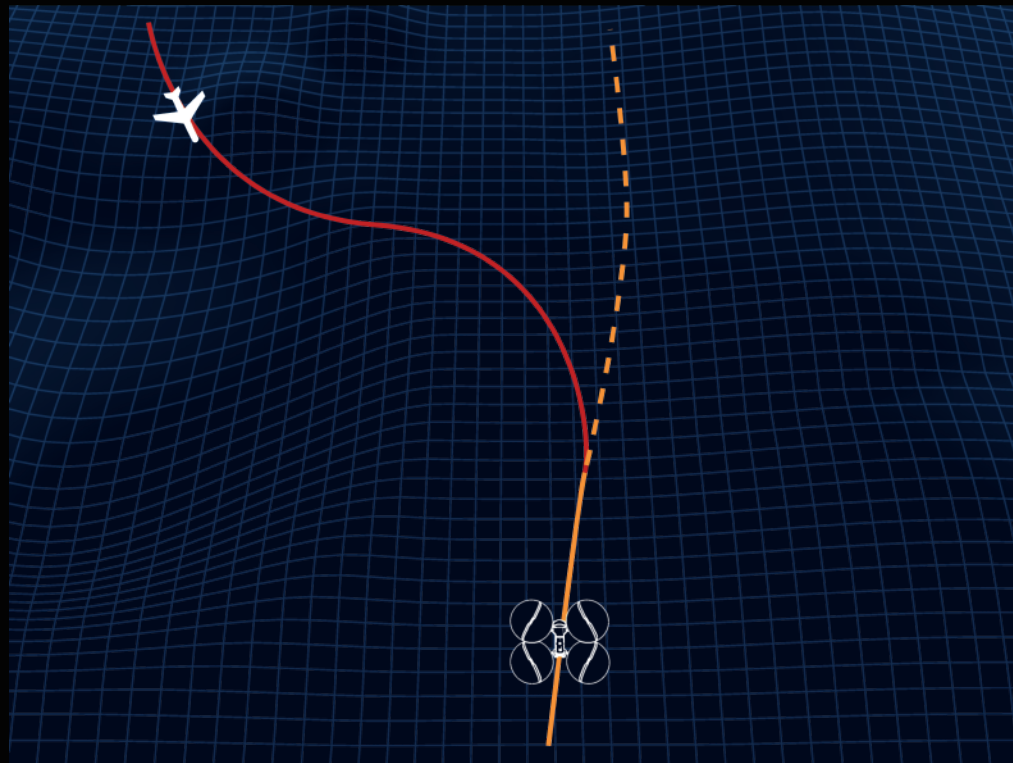


RTK Module (Optional)

Provides centimeter-accurate positioning data and reduces electromagnetic interference.

ADS-B RECEIVER

Detects the presence of any manned aircraft nearby emitting an ADS-B signal, giving the operator enough time to take evasive measures to avoid mid-air collisions.



360° OBSTACLE AVOIDANCE

Easily maneuver around obstacles, plan paths through complex terrain, or build three-dimensional maps using the 19 sets of sensors covering the airframe.

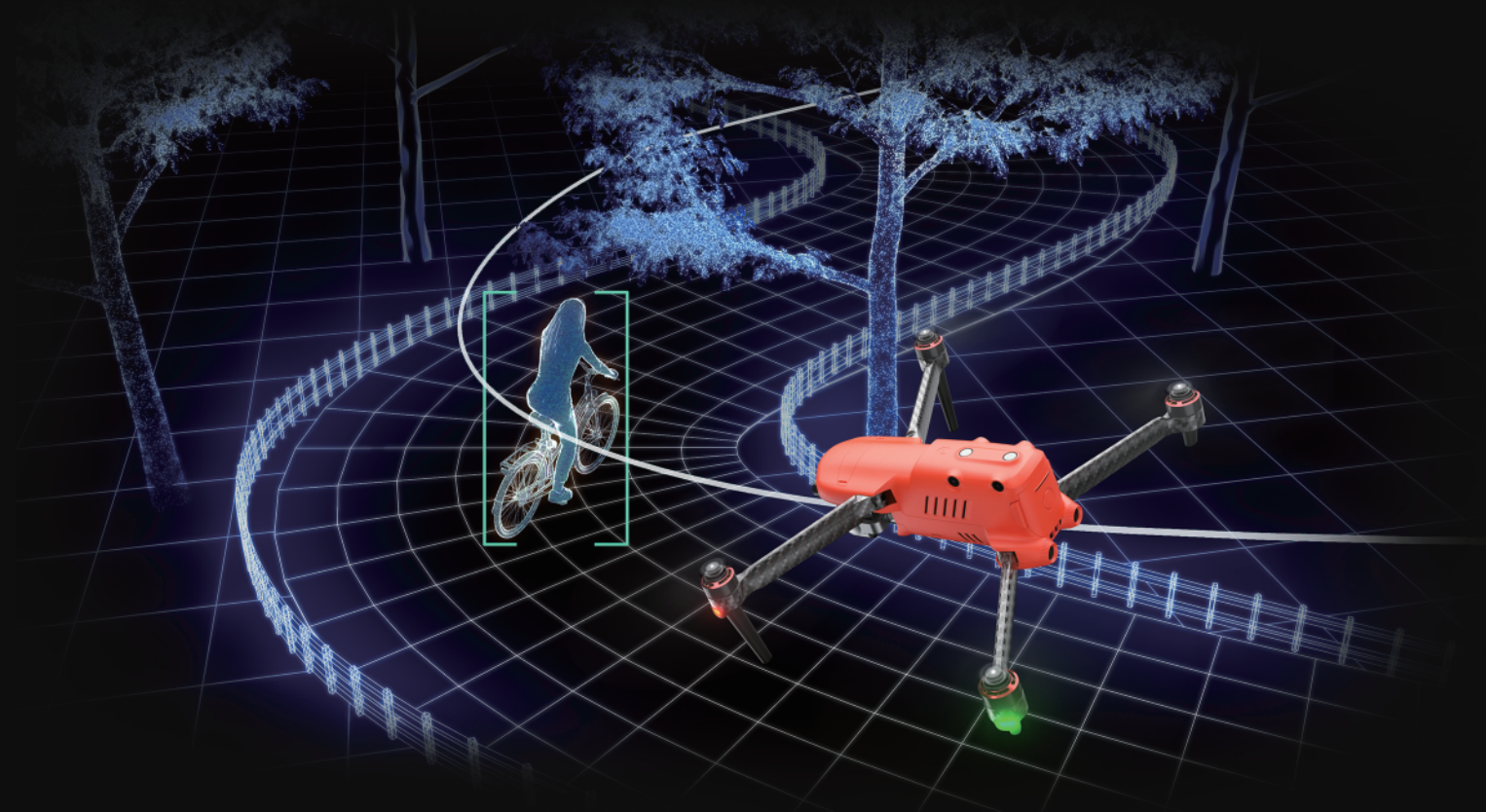
Easily maneuver around obstacles



*Please refer to quick guide for specifics

PREDICTIVE TARGET TRACKING

Lock on to an object moving at high speed and predict its trajectory with ease, or use the eye in the sky to identify up to 64 objects at once.



RELIABLE DATA ENCRYPTION

Protect sensitive information through encrypted internal and external storage, allowing users to work with confidence.



SUPERIOR FLIGHT PERFORMANCE

The EVO II Enterprise's flight performance has been fully optimized thanks to its new power system and carbon fiber structural design. Equipped with an industry-leading dual-frequency image transmission system, the unit also provides stronger anti-interference capabilities and stable transmission of high-definition images up to 1080p.



42Min Max
Flight Time



8miles(13km) Max
Transmission Range



44mph(72km/h) Max
Max Speed



38mph(17m/s) Max
Wind Resistance

SPECS

AIRCRAFT		
TAKEOFF WEIGHT (Without Accessories)	EVO II Pro Enterprise:2.45lbs (1110g)	EVO II Dual 640T Enterprise:2.51lbs (1136.5g)
Diagonal Length	16.8in (427mm)	
Max Flight Time (no wind)	42min (without accessories) ;38min (with strobe) ;29min (with spotlight) ; 34min (with loudspeaker) ;36min (with RTK module)	
Operating Temperature	14°F to 104°F (-10°C to 40°C)	
Max Wind Speed Resistance	39mph (17m/s)	
Operating Frequency	2.400GHz - 2.4835GHz;5.725GHz - 5.850GHz	
Hovering Accuracy Range	Vertical:± 0.3ft (0.1m) (with RTK); ± 0.3ft (0.1m) (with Vision Positioning); ± 1.6ft (0.5m) (with GPS Positioning)	
	Horizontal: ± 0.3ft (0.1m) (with RTK); ± 0.9ft (0.3m) (with Vision Positioning); ± 4.9ft (1.5m) (with GPS Positioning)	

ACCESSORIES	
Loudspeaker	Power:Max 18W;Decibel:120dB @ 1m;88dB @ 60m;70dB @ 110m; Max Bitrate:36kbps;Adjustable Angle Range:0°~45°
Strobe	Power:Avg. 1.6W;Controllable Range:5000m; Light intensity:Min 50cd;Max 486cd;Avg. 290cd
Spotlight	Power:Max 35W;Controllable Range:30m Adjustable Angle Range:0°~90°;Illuminance:FOV17°, Max:11lux @ 30m Straight



EVO II Enterprise

WORK LIKE NEVER BEFORE



WORK LIKE NEVER BEFORE

Optimize your workflow with our toughest EVO II yet, bulked up with new accessories and camera features to meet the demands of professionals in every industry from firefighting to construction. With a foldable design that can be deployed in seconds and easy-to-use controls that can be operated with a single hand, the EVO II Enterprise provides a surefire way to increase efficiency without increasing stress.



16X

16x Digital Zoom



8-mile HD
Transmission



Modular
Accessories



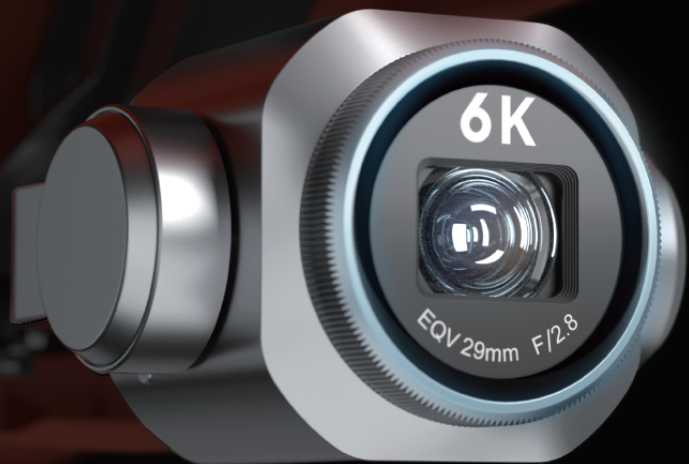
Centimeter-level
Positioning with RTK

ADS-B

ADS-B Receiver



360° Obstacle
Avoidance



High-resolution Imaging

EVO II Pro Enterprise

20MP 1"CMOS Sensor

3x Lossless 16x Digital Zoom Capability

Adjustable Aperture Range of f2.8 to f11

Dual Camera

EVO II Dual 640T Enterprise

640*512 Thermal Imaging Sensor

48MP Visual Camera

Multiple Display Modes: Visual, Thermal, Picture-in-Picture

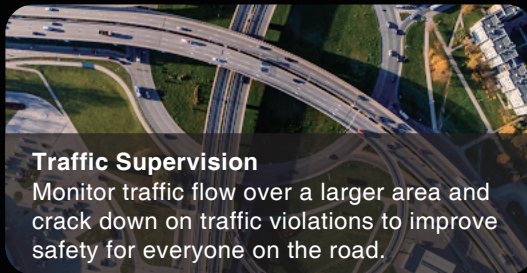


APPLICATIONS



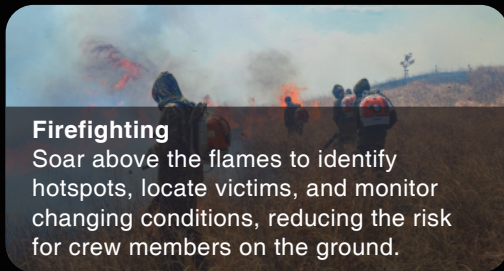
Public Safety

Assess threats from a safe distance or patrol an area during an investigation, freeing up manpower for other tasks.



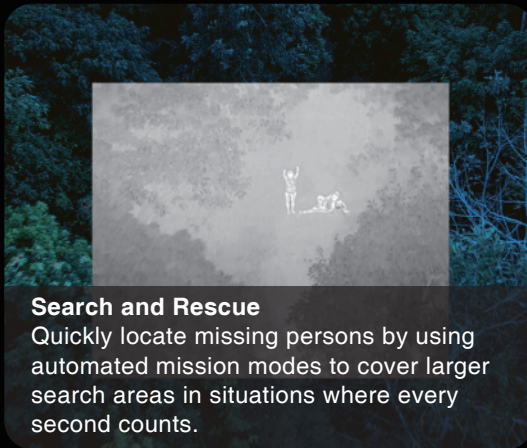
Traffic Supervision

Monitor traffic flow over a larger area and crack down on traffic violations to improve safety for everyone on the road.



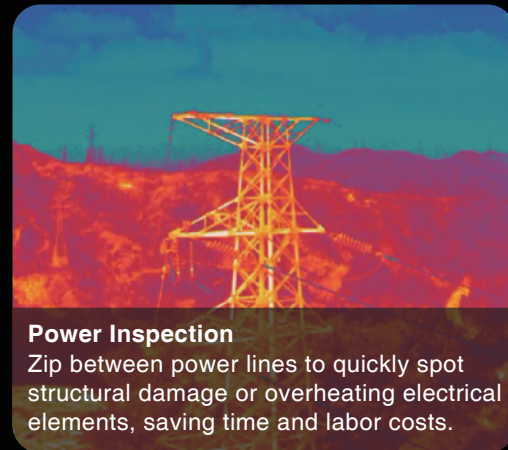
Firefighting

Soar above the flames to identify hotspots, locate victims, and monitor changing conditions, reducing the risk for crew members on the ground.



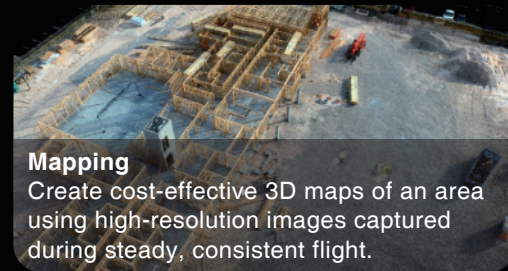
Search and Rescue

Quickly locate missing persons by using automated mission modes to cover larger search areas in situations where every second counts.



Power Inspection

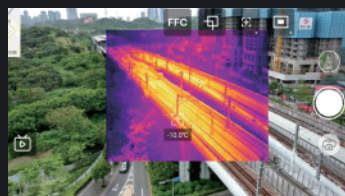
Zip between power lines to quickly spot structural damage or overheating electrical elements, saving time and labor costs.



Mapping

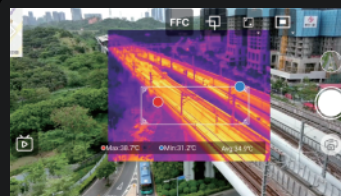
Create cost-effective 3D maps of an area using high-resolution images captured during steady, consistent flight.

MULTIPLE TEMPERATURE MEASUREMENT MODES



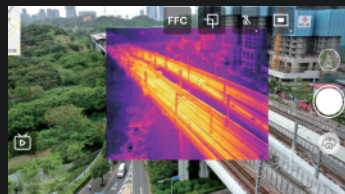
Spot Temperature Measurement

Displays the temperature of a selected object with just a tap of the screen.



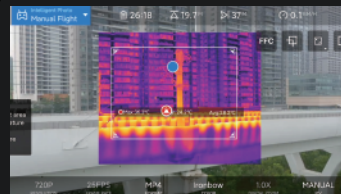
Regional Temperature Measurement

Displays the maximum, minimum, and average temperature of a selected area.



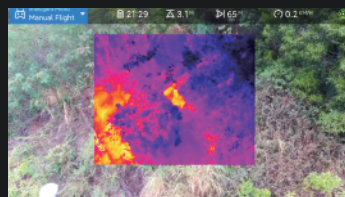
Central Temperature Measurement

Displays the temperature in the center area of the screen.



Temperature Alarm

Alerts the user when the temperature of an area reaches a predetermined threshold.



Isotherm

Detects any objects within a specified temperature range.

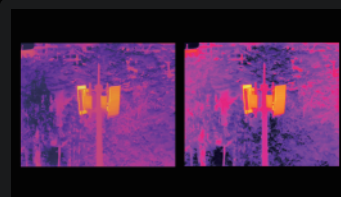


Image Enhancement

Allows the user to adjust image brightness, contrast, and image details in real time.

POWERFUL TELEPHOTO ZOOM

Collect high-definition images from a safe distance with 16x digital zoom that supports 4x lossless zoom (EVO II Dual 640T Enterprise) or 3x lossless zoom (EVO II Dual Pro Enterprise).

16X

Digital Zoom



Mission Versatility

With an expanded selection of accessories at its disposal, the EVO II Enterprise can evolve from a simple imaging tool to a multifunctional flight platform that can adapt to different scenarios.



ACCESSORIES



Loudspeaker

Enables more effective on-site communication through long-distance telephony and audio loops.



Spotlight

Beams a powerful, long-distance aerial light when searching or shooting at night.



Strobe

Indicate the location of the aircraft at night to avoid air traffic accidents.

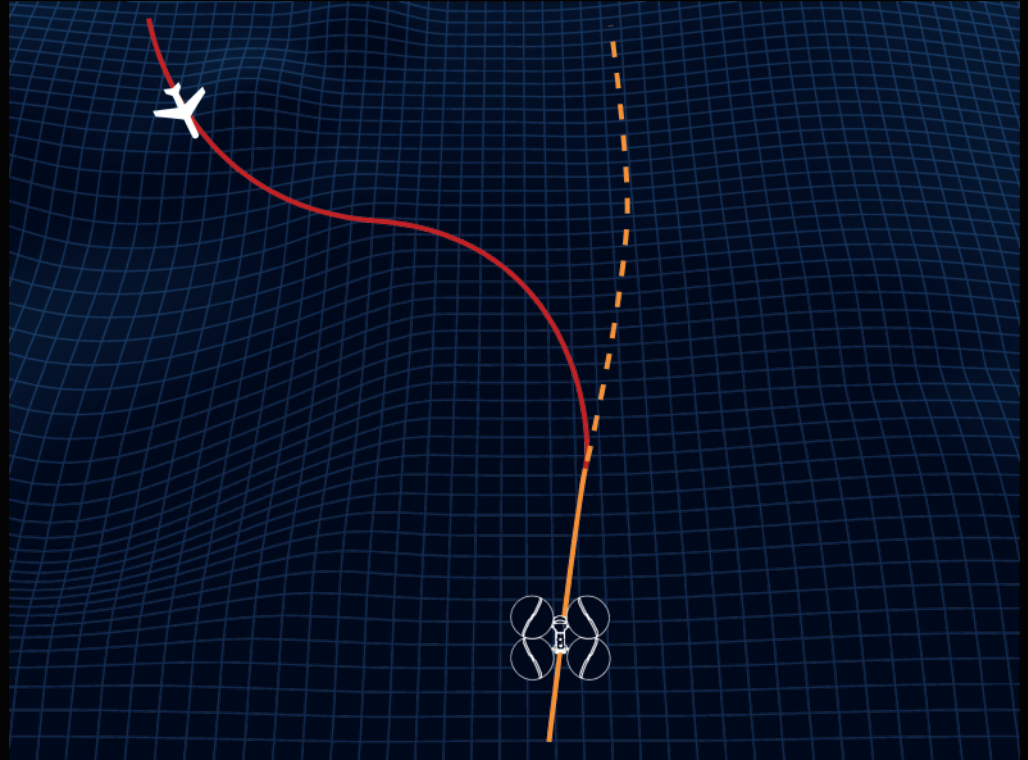


RTK Module (Optional)

Provides centimeter-accurate positioning data and reduces electromagnetic interference.

ADS-B RECEIVER

Detects the presence of any manned aircraft nearby emitting an ADS-B signal, giving the operator enough time to take evasive measures to avoid mid-air collisions.



360° OBSTACLE AVOIDANCE

Easily maneuver around obstacles, plan paths through complex terrain,
or build three-dimensional maps using the 19 sets of sensors covering the airframe.

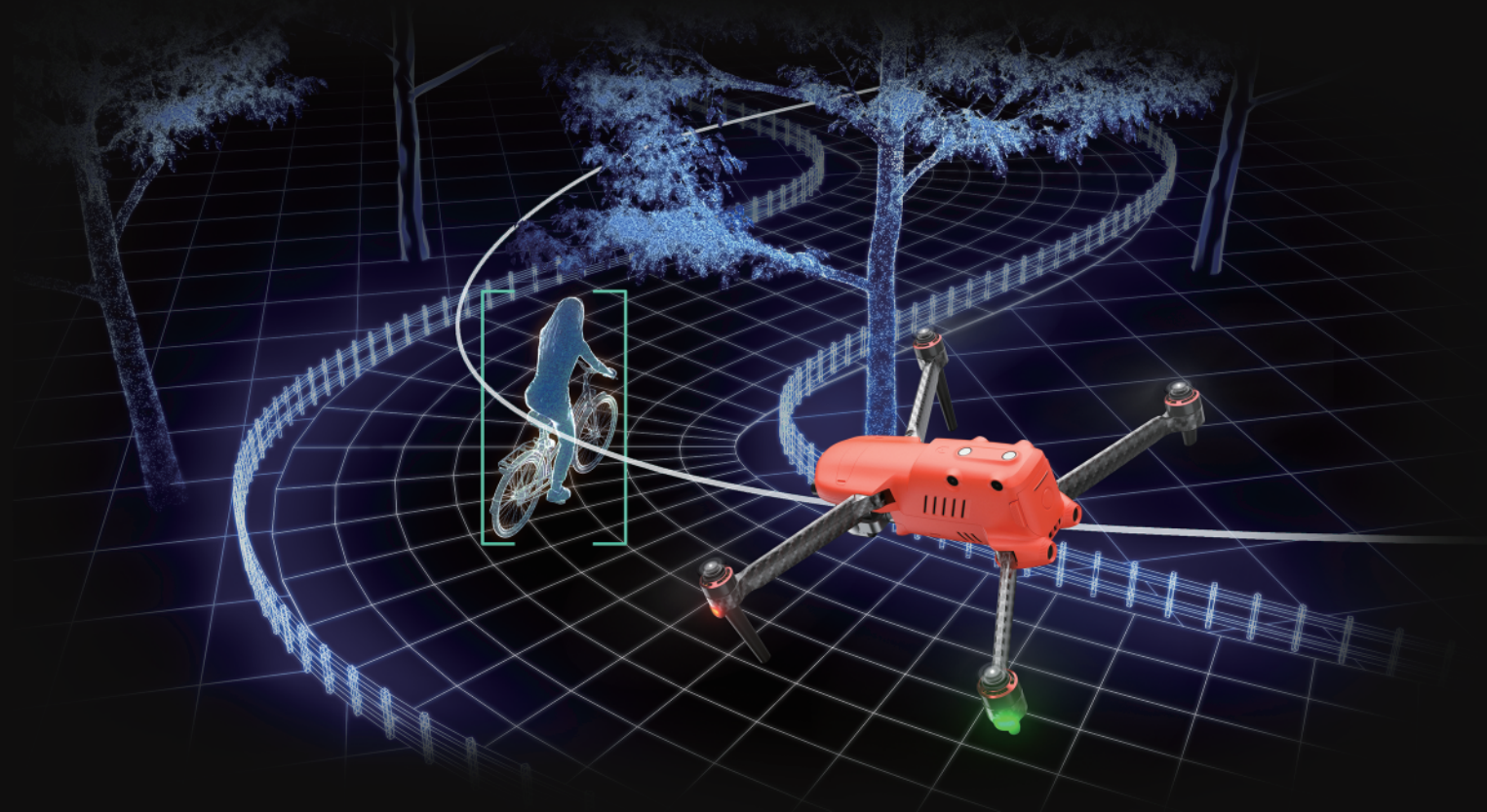
Easily maneuver around obstacles



*Please refer to quick guide for specifics

PREDICTIVE TARGET TRACKING

Lock on to an object moving at high speed and predict its trajectory with ease, or use the eye in the sky to identify up to 64 objects at once.



RELIABLE DATA ENCRYPTION

Protect sensitive information through encrypted internal and external storage, allowing users to work with confidence.



SUPERIOR FLIGHT PERFORMANCE

The EVO II Enterprise's flight performance has been fully optimized thanks to its new power system and carbon fiber structural design. Equipped with an industry-leading dual-frequency image transmission system, the unit also provides stronger anti-interference capabilities and stable transmission of high-definition images up to 1080p.



42Min Max
Flight Time



8miles(13km) Max
Transmission Range



44mph(72km/h)
Max Speed



38mph(17m/s) Max
Wind Resistance

SPECS

AIRCRAFT

TAKEOFF WEIGHT (Without Accessories)	EVO II Pro Enterprise:2.45lbs (1110g) EVO II Dual 640T Enterprise:2.51lbs (1136.5g)
Diagonal Length	16.8in (427mm)
Max Flight Time (no wind)	42min (without accessories) ;38min (with strobe) ;29min (with spotlight) ; 34min (with loudspeaker) ;36min (with RTK module)
Operating Temperature	14°F to 104°F (-10°C to 40°C)
Max Wind Speed Resistance	39mph (17m/s)
Operating Frequency	2.400GHz - 2.4835GHz;5.725GHz - 5.850GHz
Hovering Accuracy Range	Vertical:± 0.3ft (0.1m) (with RTK);± 0.3ft (0.1m) (with Vision Positioning); ± 1.6ft (0.5m) (with GPS Positioning)
	Horizontal: ± 0.3ft (0.1m) (with RTK);± 0.9ft (0.3m) (with Vision Positioning);± 4.9ft (1.5m) (with GPS Positioning)

ACCESSORIES

Loudspeaker	Power:Max 18W;Decibel:120dB @ 1m;88dB @ 60m;70dB @ 110m; Max Bitrate:36kbps;Adjustable Angle Range:0°~45°
Strobe	Power:Avg. 1.6W;Controllable Range:5000m; Light intensity:Min 50cd;Max 486cd;Avg. 290cd
Spotlight	Power:Max 35W;Controllable Range:30m Adjustable Angle Range:0°~90°;Illuminance:FOV17°, Max:11lux @ 30m Straight

CAMERA

Camera	EVO II Pro Enterprise Camera	EVO II Dual 640T Enterprise Thermal Camera	EVO II Dual 640T Enterprise Visual Camera
Sensor	1-inch CMOS; 20 million effective pixels	Vanadium oxide uncooled infrared focal plane detector	1/2 inch CMOS; 48M effective pixels
Fov	82°	H33°V26°	79°
Aperture	f/2.8 - f/11	f/1.2	f/1.8
Focus Range	1m to ∞	-	0.5m to ∞
Equivalent Focal Length	28.6 mm	57mm	25.6mm
Zoom	1-16x (up to 3x lossless zoom)	1-8x	1-16x (up to 4x lossless zoom)

SENSING SYSTEM

Sensing System Type	Forward	Backward	Upward	Downward	Sides
Accurate Measuring Range	1.6 – 65ft (0.5 - 20m)	1.6 – 52ft (0.5 - 16m)	1.6 – 39ft (0.5 - 12m)	1.6 – 36ft (0.5 - 11m)	1.6 – 39ft (0.5 - 12m)
Detection Range	1.6 – 131ft (0.5 - 40m)	1.6 – 104ft (0.5 - 32m)	1.6 – 78ft (0.5 - 24m)	1.6 – 72ft (0.5 - 22m)	1.6 – 78ft (0.5 - 24m)
Effective Sensing Speed	< 33mph (15m/s)	< 26mph (12m/s)	< 13mph (6m/s)	< 13mph (6m/s)	< 22mph (10m/s)
FOV	Horizontal: 60°, Vertical: 80°	Horizontal: 60°, Vertical: 80°	Horizontal: 65°, Vertical: 50°	Horizontal: 100°, Vertical: 80°	Horizontal: 65°, Vertical: 50°
Service Environment	Forward, Backward, and Sides: Surface with clear pattern and adequate lighting (lux > 15) Upward: Detects diffuse reflective surfaces (>20%) (walls, trees, people, etc.) Downward: Surface with clear pattern and adequate lighting (lux > 15) Detects diffuse reflective surfaces (>20%) (walls, trees, people, etc.)				